

# BERKLEY T O O L PIPEMASTER



*Berkley Tool is proud to offer the most comprehensive selection of replacement parts and accessories for pipe threading and cutting equipment. Berkley's high quality products are also designed as replacement items that fit products manufactured by the Ridge Tool Company. Precision manufacturing, exacting standards and outstanding customer service combine to make Berkley Tool products the best value available. Compare our quality. Compare our prices. Compare our value. Then call Berkley Tool for performance.*

<b>BERKLEY</b>	<b>PAGE</b>
Pipe Cutters .....	1-2
Cutter Wheels .....	3
Berkley Cutter Wheel Cross Over Reference Chart .....	4
Pipe Wrenches .....	5
Strap Wrenches .....	6
Pipe Wrench Parts .....	6
Pipe Stands .....	7
Threading Dies .....	8-9
Threader Sets .....	10-11
Pipe Taps .....	11
Power Threader .....	12-13
Power Threader Accessories .....	14
Replacement Parts .....	15
Hydrostatic Pumps .....	16
Roll Groovers .....	17
Plumbing Tools .....	18-19
Merchandising/POP .....	20

# Pipe Cutters (Metal)

These Pipe cutters feature malleable iron frames for durability. Wide rollers help ensure blade tracking. \*Rollers can be removed and replaced with blades to speed cutting. All cutters feature replaceable cutter wheels, which can be selected to suit the application. See page 4 for cutter wheel selection chart.



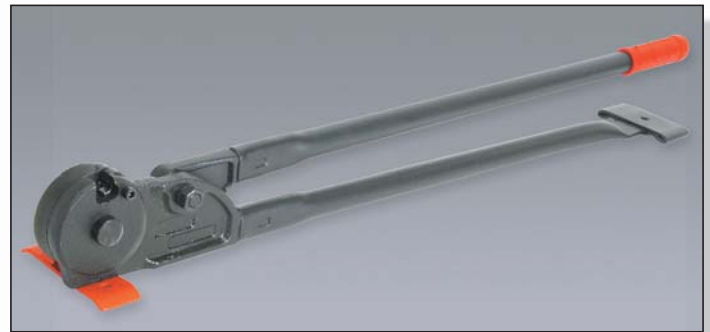
**BT-30033\***  
The BT-30033 is designed to fit the Berkley BT-5020 Power Drive as well as the RIDGID® Model No. 300 and 535.

## BT-50000\*

The BT-50000 is a hand cutter designed to cut pipe up to 2" diameter.

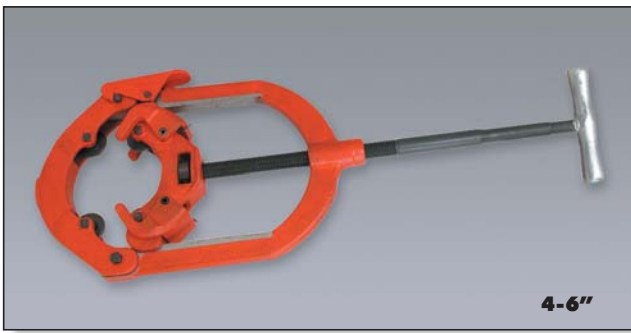


## BT-50224



## BT-50375

Unit cuts 3/8" threaded rod clean. No additional cleaning after cutting just screw nut on end. Replaceable cutting jaws.



## BT-50426

BERKLEY #	RIDGE TOOL #	DESCRIPTION	CAPACITY	WEIGHT
BT-50000	32820	Hand Held Pipe Cutter	1/8-2" 3-50mm	7.0
BT-30033	42370	Cutter fits BT-5020/535	1/8-2" 3-50mm	7.5
BT-60000	34775	Roller Wheel	1 - 2"	N/A
BT-60002	34780	Cutter Wheel Pin	N/A	N/A
BT-60003	34785	Roller Wheel	2 1/2" - 6"	N/A
BT-60004	34790	Cutter Wheel Pin	N/A	N/A
BT-50224	424S	4 Wheel Hinged Pipe Cutter	2-4" Steel	14.5
BT-50246	466S	4 Wheel Hinged Pipe Cutter	4-6" Steel	20.25
BT-50375	N/A	Threaded Rod Cutter	3/8" UNC	9

# Pipe Cutters (Tubing)



These tubing cutters are made from a high strength alloy; all feature rollers that are grooved which allows close to flare cuts. Some models have an enclosed feed screw which helps prevent clogging. Units are designed to cut soft copper, aluminum, brass and plastic tubing.

BERKLEY #	RIDGE TOOL#	DESCRIPTION	CAPACITY	WEIGHT
BT-9400	40617	Midget Cutter	1/8" to 7/8"	.3 LB
BT-9401	31622	Enclosed Tubing Cutter	1/8" to 1-1/8"	.5 LB
BT-9402	33055	Enclosed Tubing Cutter	3/16" to 2"	.5 LB
BT-9403	31642	Fast Acting Enclosed Tubing Cutter	1/2" to 2"	.75 LB
BT-3400	33158	Cutter Wheel for above	-	8 oz

# Pipe Cutters (Plastic)



All models feature cast aluminum handles and tool steel blades for durability. These cutters are designed for cutting plastic pipe. All models feature ratcheting action to aid cutting, and feature a quick release blade mechanism to return the blade to the start position. Large cutter features long handles to provide extra leverage when cutting large diameter pipe.

	BERKLEY #	DESCRIPTION	CAPACITY	LENGTH	WEIGHT (LBS.)
<b>A</b>	BT-SP102	Ratcheting Cutter	1/4 - 2"	8.00"	1.50
<b>B</b>	BT-SP103	Pistol Plastic Cutter	1/4 - 1 1/2"	7.50"	1.00
<b>C</b>	BT-SP104	Straight Plastic Cutter	1/2 - 1 1/2"	11.00"	1.00
<b>D</b>	BT-SP105	Large Plastic Cutter	1/2 - 2 1/2"	17.00"	1.25

# Cutter Wheels



*Berkley pipe and tubing cutter wheels are made in the USA using the highest quality tool steel. Wheels are then heat treated to exacting standards to ensure durability. Consult the interchange chart on page four, for the cutter wheel to suit your operation/application.*

# Berkley Cross Reference Chart

N.A.=NOT AVAILABLE H.D.=HEAVY DUTY

REED CUTTER	REED WHEEL	Ridge Tool CUTTER	Ridge Tool OLD#	Wheel NEW#	BERKLEY CUTTER WHEEL	APPLICATION
<b>PIPE CUTTERS</b>						
2-1, 2-1Q, 2-4WG	2RBS	1, 2, 42, 535, 300, 1A, 2A, 42A, 201, 202, 360, 820, 364	F514	33100	BT-01100	Steel, Ductile Iron-Thin
2-3, 2-3Q, 2-4	2RBHD		F3	33105	BT-01000	Steel & Ductile Iron-H.D.
			F3S	33110	BT-01200	H.D. for Steel, Stainless Steel
			F-119	33115	BT-01300	Grey Cast Iron
3-1, 3-3, 3-4	HS4	3, 4, 3S, 4S, 44, 44S all of: 466, 468, 472 (ie.C, S, HWS)	F229HD, F229S	33130	BT-04200	Stainless Steel
	3RG		F515	33120	BT-04100	Steel & Ductile Iron-Thin
	3RG-CI		F229	33125	BT-04000	Steel & Ductile Iron-H.D.
			E3186	83140	BT-04300	Steel & Ductile Iron-Hvy. Wall
			E1962	33135	BT-03000	Cast Iron
						Steel
5B, 6B, 6-1/2B, 7B	5B					Soil Pipe
SP4	SP4					Steel
H2-1/2	HX2-1/2	300, 535, 802, 360, 820, 364	E1032	44185	BT-02000	Steel
			E1032S	44190	BT-02100	Stainless Steel
		206	E109	33220	BT-02200	Cast Iron
		246	E2362	33225	BT-02300	Cast Iron
	R367	6S, 208, 209	F367	33145	BT-06000	Steel, Ductile Iron
			F367S	33150	BT-06100	Stainless Steel
			F383	33155	BT-01400	Grey Cast Iron
		6S, 208				
<b>TUBING CUTTERS</b>						
TC1Q, TC1QP, T10, T15	0	00, 0, 12, 15, 20, 10	F158	33160	BT-01500	Copper, Aluminum, Brass Tubing
TC2Q (A or P), TC15, T20	0SS		E1240	33165	BT-01210	Steel & Stainless Steel Tubing
TC3Q, TC3QP, TC4Q	30-40	30, 40, 153, 134, 154, 136, 156	E2191	33175	BT-02110	Steel Tubing
TC4QP, TC6Q, TC6QP		same plus 106, 108, 109	E2558	33170	BT-02500	Aluminum & Copper Tubing
MC1	32633					
TC11	75015					
TC11	75046					
MC2	345T	101, 103, 104, 105, 131, 132 150, 151, 152, 205	E3469	33185	BT-03400	Copper, Aluminum, Brass Tubing
	R2990	315	E2990	33205	N.A.	Copper, Aluminum, Steel Tubing
MC2	R4546	105, 131, 132, 205, 150, 151, 152, 153P	E4546	33190	BT-04500	Steel & Stainless Steel Tubing
<b>PLASTIC</b>						
TC1QP, TC1Q, TC2QP	OP2	15			N.A.	ABS, PE, PB, PP
TC2Q, TC15, T10, T15, T20	1-2PVC	20			N.A.	PVC
TC3QP, TC3Q	30-40P	30P, 40	E2156	73730	N.A.	ABS, PE, PB, PP
TC4QP, TC4Q	3-6PVC	106, 133P	E5299, E2157	33180, 74735	N.A.	PVC
TC6QP, TC6Q	6QP	134P, 136P, 154P, 156P			N.A.	Thick wall PE
TC6QP, TC8QP	8QP	136P, 136			N.A.	ABS, PE, PB, PP
	R2155	105, 131P, 132P, 205P	E2155	74720	N.A.	PE, PB, PP-std, hvy.
	R5272	151P, 152P	E5272	33195	N.A.	PVC, ABS-std
<b>REED PIPE CUTTERS</b>						
H2-1/2	HS2-1/2				N.A.	Steel, Stainless Steel
H4	HS4				BT-04400	Steel, Stainless Steel
H6	HS6				BT-06600	Steel, Stainless Steel
H8, H12	HS8-12				BT-08000	Steel, Stainless Steel
H2-1/2	HX2-1/2				N.A.	XS Steel
H4	HX4				N.A.	XS Steel
H6	HX6				N.A.	XS Steel
H8, H12	HX8				N.A.	XS Steel
H8, H12	HXX8				N.A.	XXS Steel
H2-1/2	2RBCI				N.A.	Cast, Ductile Iron
H4	HI4				BT-04600	Cast, Ductile Iron
H6, H8, H12	HI6				BT-06700	Cast, Ductile Iron
H6, H8, H12	H6PSE5				N.A.	Cast, Ductile Iron, Steel
<b>ALL REED CUTTERS</b>						
	RCS8-30				BT-08100	Steel, Stainless Steel-STD.
	RCI8-30				BT-08200	Cast, Ductile Iron, (manual)
	RCD8-30				N.A.	Cast, Ductile Iron, (power)
	RCDX				N.A.	Hvy. Pit Cast, Duct. Iron (power)
	RCX				N.A.	Hvy. Steel, Stainless Steel
<b>IMPERIAL</b>						
		75015	274FC, 312FB, 174F,		BT-9015	Tubing Cutter Heavy
		75046	374FC, TC1000, TC1020		BT-9046	Wheel Cutter Stainless Steel
		32633	127F, FA, FB;227F, FA;TC1050		BT-9633	Tubing Cutter
		74761	206FA, 206FB		BT-9761	
<b>ELLIS FORD</b>						
		001-1-113			BT-05500	Steel
		01-1-113	01, 1, 13, 4"-8", 4"-12", 4"-16"		BT-05600	Cast Iron
<b>COLLINS</b>						
		1128HD	22A		BT-09000	Steel
		4121HD	44A, 66A		BT-09100	Steel
		03221, 00034	EZ roller cutter with ball bearing center 1/4"-4" (OD)		BT-09200	Steel

# Pipe Wrenches

Berkley Pipemaster wrenches are manufactured in the U.S.A. to meet government specification GGG-W-651-E. Iron handle wrenches are available in 4 handle styles; **Straight**, the standard; **End Iron**, which allows for use in areas with space restrictions. Aluminum models have the identical jaws as their iron counterparts and weigh nearly 40% less!



From 6" to 48"

## Iron Handle



BERKLEY #	RIDGE TOOL #	SIZE (IN.)	PIPE CAP. (IN.)	WEIGHT (LBS.)
<b>STRAIGHT</b>				
BT-70010	31010	10	1.50	1.75
BT-70012	31015	12	2.00	2.75
BT-70014	31020	14	2.00	3.50
BT-70018	31025	18	2.50	5.75
BT-70024	31030	24	3.00	9.75
BT-70036	31035	36	5.00	17.00
BT-70048	31040	48	6.00	34.00

## Aluminum Handle



BERKLEY #	RIDGE TOOL #	SIZE (IN.)	PIPE CAP. (IN.)	WEIGHT (LBS.)
BT-71010	31090	10	1.50	1.25
BT-71014	31095	14	2.00	2.00
BT-71018	31100	18	2.50	3.50
BT-71024	31105	24	3.00	5.75
BT-71036	31110	36	5.00	10.00
BT-71048	31115	48	6.00	17.00

Aluminum models have the identical jaws as their iron counterparts and weigh nearly 40% less!

# Strap Wrenches



Strap Wrench handles are malleable iron and meet U.S. Govt. mil spec GGG-W-651-E type 5. Strap Wrenches are available in two handle lengths and three strap lengths. All straps are replaceable and are polyurethane coated to provide a non slip grip while preventing marring of chrome, brass, plastic and other hard to grip items.

BERKLEY #	RIDGE TOOL #	DESCRIPTION	CAPACITY	WEIGHT (LBS.)
BT-78012	31340	12" Strap Wrench	2"	2.00
BT-78018	31345	18" Strap Wrench	5"	4.75
BT-78018L	N/A	18" Strap Wrench w/ 36" strap	6"	5.00
BT-78712	N/A	Replacement Strap for 78012	N/A	.50
BT-78718	N/A	Replacement Strap for 78018	N/A	.50
BT-78718L	N/A	Replacement Strap for 78018L	N/A	.50

# Pipe Wrench Parts

BERKLEY #	RIDGE TOOL #	DESCRIPTION
BT-70206	31570	6" Pipewrench Nut
BT-70208	31595	8" Pipewrench Nut
BT-70210	31615	10" Pipewrench Nut
BT-70212	31645	12" Pipewrench Nut
BT-70214	31665	14" Pipewrench Nut
BT-70218	31685	18" Pipewrench Nut
BT-70224	31710	24" Pipewrench Nut
BT-70236	31735	36" Pipewrench Nut
BT-70248	31760	48" Pipewrench Nut
BT-70406	31560	6" Heel, Jaw & Pin Assembly
BT-70408	31585	8" Heel, Jaw & Pin Assembly
BT-70410	31610	10" Heel, Jaw & Pin Assembly
BT-70412	31635	12" & 14" Heel, Jaw & Pin Assembly
BT-70418	31675	18" Heel, Jaw & Pin Assembly
BT-70424	31700	24" Heel, Jaw & Pin Assembly
BT-70436	31725	36" Heel, Jaw & Pin Assembly
BT-70448	31750	48" Heel, Jaw & Pin Assembly
BT-70506	31565	6" Coil & Flat Spring
BT-70508	31590	8" Coil & Flat Spring
BT-70510	31620	10" Coil & Flat Spring
BT-70512	31640	12" Coil & Flat Spring
BT-70514	31660	14" Coil & Flat Spring
BT-70518	31680	18" Coil & Flat Spring
BT-70524	31705	24" Coil & Flat Spring
BT-70536	31730	36" Coil & Flat Spring
BT-70548	31755	48" Coil & Flat Spring
BT-70606	31555	6" Hook Jaw
BT-70608	31580	8" Hook Jaw
BT-70610	31605	10" Hook Jaw
BT-70612	31630	12" Hook Jaw
BT-70614	31655	14" Hook Jaw
BT-70618	31670	18" Hook Jaw
BT-70624	31695	24" Hook Jaw
BT-70636	31720	36" Hook Jaw
BT-70648	31745	48" Hook Jaw

Berkley Pipe Wrench parts are made to Govt. Mil spec. GGG-W-651-E. All components are made from the highest quality materials, machined and heat-treated to exacting specifications. These components will interchange with most pipe wrenches in the market.





# Pipe Stands



## Pipe Stands Material Holding

Berkley's broad line of work holding stands accommodate pipe from 1/2 - 12".



## Bench Chain Vise

Heavy-duty ductile steel provides durability. Small footprint allows placement anywhere a secure pipe vise is needed. Hardened replaceable jaws have a five-inch capacity; designed to hold pipe but can also secure irregular shaped objects.

## Chain Vise Stand

Chain vise has folding lower tray for ease of transporting, while providing additional workspace to hold tool, or oil cans within convenient reach. Vise base has integral pipe rest and pipe bending slots and hardened replaceable jaws. Parts interchangeable with competitive style units.

## Pipe Stands

These heavy-duty pipe stands feature all steel construction and are available in working heights from 20-50 inches. All jacks have an acme-threaded shaft for precision height adjustment. Safety washer design provides a safety zone to help prevent hand injuries when releasing the lock screw. Stands are available in V-Head and Roller Head styles. Ball bearing transfers are also available to fit V-Heads. All stands are rated at 2000 pound capacity.

BERKLEY #	RIDGE TOOL #	DESCRIPTION	HEIGHT	PIPE CAP	WEIGHT (LBS.)
BT-21000A	56662	V-Head Stand Tall	28-50"	1/8-12"	22
BT-21001A	56657	V-Head Stand Low	20-35"	1/8-12"	17
BT-21002A	56672	Roller Head Tall	28-50"	1-12"	26
BT-21003A	56667	Roller Head Low	20-35"	1-12"	21
BT-335	40160	Chain Vise Stand	N/A	1/8-6"	45
BT-310	40205	Bench Chain Vise	N/A	1/8-5"	16

# Threading Dies



## Threading Dies

Berkley dies are manufactured to meet ANSI and ISO specifications. High-grade tool steel, world class manufacturing and stringent quality control ensure Berkley dies provide fast clean threads and long life. Dies available only in right hand models.

## Pipe Dies

Dies are designed to fit in Berkley 41000 series dropheads as well as the following RIDGID® Heads Model No. 12R, 00-R, 111-R, 0-R, 11-R, 30A and 31A Drop Heads

SIZE	NPT ALLOY		NPT HIGH SPEED		NPSM ALLOY		BSPT HIGH SPEED	
	BERKLEY #	RIDGE TOOL #	BERKLEY #	RIDGE TOOL #	BERKLEY #	RIDGE TOOL #	BERKLEY #	RIDGE TOOL #
1/4"	BT-00001	37815	BT-00009	37860	N/A	N/A	BT-00110	66315
3/8"	BT-00002	37820	BT-00010	37865	N/A	N/A	BT-00111	66320
1/2"	BT-00003	37825	BT-00011	37870	BT-00019	37960	BT-00112	66325
3/4"	BT-00004	37830	BT-00012	37875	BT-00020	37965	BT-00113	66330
1"	BT-00005	37835	BT-00013	37880	BT-00021	37970	BT-00114	66335
1 1/4"	BT-00006	37840	BT-00014	37885	BT-00022	37975	BT-00115	66340
1 1/2"	BT-00007	37845	BT-00015	37890	BT-00023	37980	BT-00116	66345
2"	BT-00008	37850	BT-00016	37895	BT-00024	37985	BT-00117	66350

## Universal Dies

Dies are designed to fit Berkley #BT-99992 Die Head as well as the following RIDGID® Die Heads Model No. 504A, 711, 713, 811, 811A, 841, 842 and 815

SIZE	NPT ALLOY		NPT HIGH SPEED		NPT HIGH SPEED FOR STAINLESS		HIGH SPEED NPSM		BSPT HIGH SPEED	
	BERKLEY #	RIDGE TOOL #	BERKLEY #	RIDGE TOOL #	BERKLEY #	RIDGE TOOL #	BERKLEY #	RIDGE TOOL #	BERKLEY #	RIDGE TOOL #
1/8"	N/A	N/A	BT-00031	47755	N/A	N/A	N/A	N/A	N/A	N/A
1/4"-3/8"	BT-00028	47740	BT-00032	47760	N/A	N/A	N/A	N/A	N/A	N/A
1/2"-3/4"	BT-00029	47745	BT-00033	47765	BT-00035	47785	BT-00037	47855	BT-00108	66760
1"-2"	BT-00030	47750	BT-00034	47770	BT-00036	47790	BT-00038	47860	BT-00109	66765

# Threading Dies

## Universal Bolt Dies

Bolt Dies to fit BT-99992 Die head as well as RIDGID® Model No. 504A, 711, 713, 811A, 815A and 911									
		UNC ALLOY		UNC HIGH SPEED				UNF HIGH SPEED	
SIZE	THREADS PER INCH	BERKLEY #	RIDGE TOOL #	BERKLEY #	RIDGE TOOL #	SIZE	THREADS PER INCH	BERKLEY #	RIDGE TOOL #
1/4"	20	BT-00039	47985	BT-00071	48215	1/4"	28	BT-00055	48065
5/16"	18	BT-00040	47990	BT-00072	48220	5/16"	24	BT-00056	48070
3/8"	16	BT-00041	47995	BT-00073	48225	3/8"	24	BT-00057	48075
7/16"	14	BT-00042	48000	BT-00074	48230	7/16"	20	BT-00058	48080
1/2"	13	BT-00043	48005	BT-00075	48235	1/2"	20	BT-00059	48085
9/16"	12	BT-00044	48010	BT-00076	48240	9/16"	18	BT-00060	48090
5/8"	11	BT-00045	48015	BT-00077	48245	5/8"	18	BT-00061	48095
3/4"	10	BT-00046	48020	BT-00078	48250	3/4"	16	BT-00062	48100
7/8"	9	BT-00047	48025	BT-00079	48255	7/8"	14	BT-00063	48105
1"	8	BT-00048	48030	BT-00080	48260	1"	14	BT-00064	48145
1 1/8"	7	BT-00049	48035	BT-00081	48265	1 1/8"	12	BT-00065	48115
1 1/4"	7	BT-00050	48040	BT-00082	48270	1 1/4"	12	BT-00066	48120
1 3/8"	6	BT-00051	48045	BT-00083	48275	1 3/8"	12	BT-00067	48125
1 1/2"	6	BT-00052	48050	BT-00084	48280	1 1/2"	12	BT-00068	48130
1 3/4"	5	BT-00053	48055	BT-00085	48285	1 3/4"	5	BT-00069	N/A
2"	4 1/2	BT-00054	48060	BT-00086	48290	2"	4 1/2	BT-00070	N/A

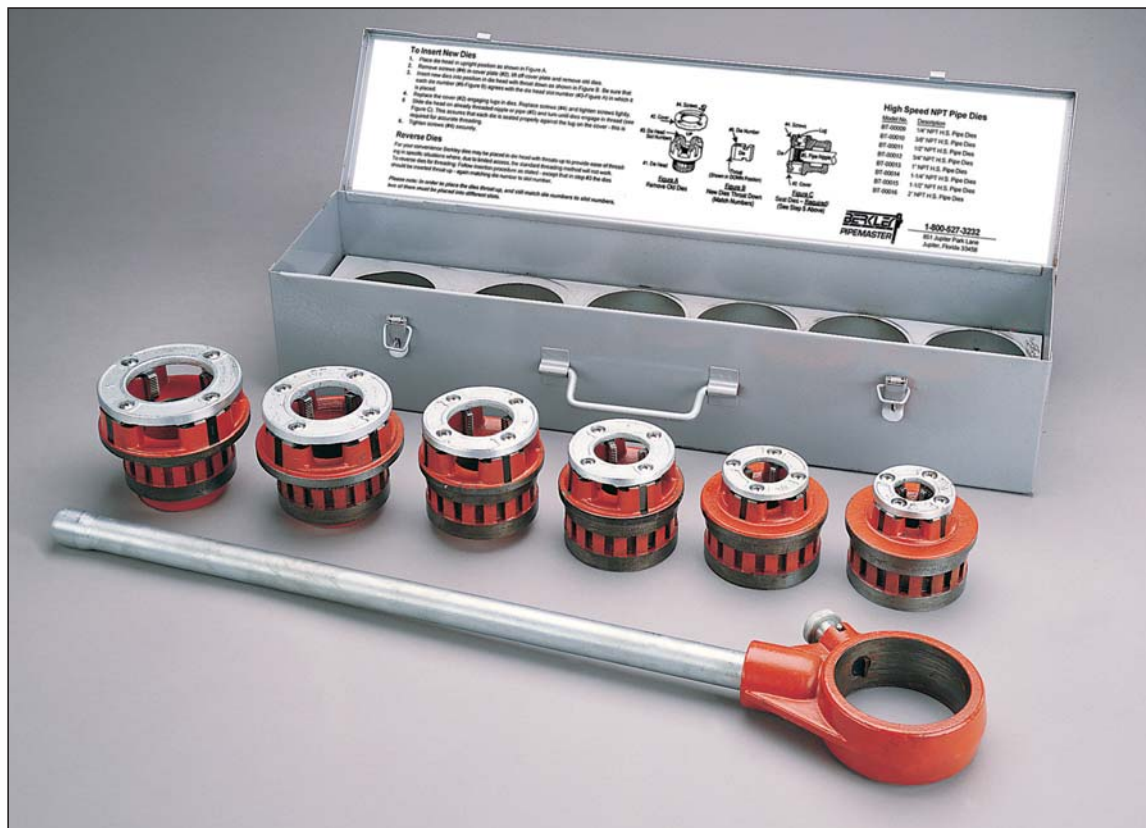
Dies to fit RIDGID® Model No. 500B, 531, 532, 541 and 542 Bolt Die Heads			
		HIGH SPEED	
SIZE	THREADS PER INCH	BERKLEY #	RIDGE TOOL #
1/4"	20	BT-00087	48065
5/16"	18	BT-00088	48610
3/8"	16	BT-00089	48615
7/16"	14	BT-00090	48620
1/2"	13	BT-00091	48625
9/16"	12	BT-00092	48630
5/8"	11	BT-00093	48635
3/4"	10	BT-00094	48640
7/8"	9	BT-00095	48645
1"	8	BT-00096	48650
1 1/8"	7	BT-00097	48655
1 1/4"	7	BT-00098	48660
1 3/8"	6	BT-00099	48665
1 1/2"	6	BT-00100	48670
1 3/4"	5	BT-00101	48675
2"	4 1/2	BT-00102	48680

Beveling Dies For RIDGID® Model No. 555 Die Head					
SIZE	BEVEL DEGREE	BEVELING #555 DIE HEAD		BEVELING UNIVERSAL DIE HEAD	
		BERKLEY #	RIDGE TOOL #	BERKLEY #	RIDGE TOOL #
1/2" - 3/4"	37 1/2	BT-00103	50925	N/A	N/A
1/2" - 3/4"	45	BT-00104	50930	N/A	N/A
1" - 2"	37 1/2	N/A	N/A	BT-00105	50960
1" - 2"	45	N/A	N/A	BT-00106	50965

Dies for RIDGID® Model No. 65R Threader					Grooving Universal Die Head	
SIZE	NPT ALLOY		NPT HIGH SPEED		BERKLEY #	RIDGE TOOL #
	BERKLEY #	RIDGE TOOL #	BERKLEY #	RIDGE TOOL #		
1" - 2"	BT-00018	N/A	BT-00025	38100	BT-00107	50985

Dies to fit Collins Snap-O-Matic Die Head			Dies to fit RIDGID® Model No. 141 & 161 Die Head		
SIZE	NPT HIGH SPEED		SIZE	NPT/NPSM HIGH SPEED	
	BERKLEY #	COLLINS #		BERKLEY #	RIDGE TOOL #
1/2" - 3/4"	BT-00126	02593/00031	2 1/2" - 4"	BT-00026	38120
1" - 2"	BT-00127	02584/00028	4" - 6"	BT-00027	38155

# Threader Sets



## Drop Head Threader Set

Berkley Drop Head Sets come complete, ready to use with a set of high speed steel N.P.T. dies, ratchet-handle and metal carrying case. Berkley's Exposed Drop heads replace RIDGID® Model No.12R series, and can be used with RIDGID® Model No. 600 and 700 power drives. Die heads included in threader set are 1/2", 3/4", 1", 1 1/4", 1 1/2", 2". \*NPSM and BSPT dies are available.

BERKLEY #	RIDGE TOOL #	DESCRIPTION	WEIGHT (LBS.)
BT-41000	36475	1/2-2" NPT Drop head threader set	40.00
BT-40002	38555	Ratchet and handle for drop heads	6.00
BT-40003	37385	3/8" NPT Alloy die head with dies	6.50
BT-40004	37480	1/2" NPT High Speed die head with dies	5.50
BT-40005	37485	3/4" NPT High Speed die head with dies	5.50
BT-40006	37490	1" NPT High Speed die head with dies	6.00
BT-40007	37495	1 1/4" NPT High Speed die head with dies	6.00
BT-40008	37500	1 1/2" NPT High Speed die head with dies	7.00
BT-40009	37505	2" NPT High Speed die head with dies	7.00
BT-45000	38625	Metal Carry Box for drop head set	15.50
BT-30050	N/A	One gallon dark thread cutting oil	8.50

# Threader Sets

## Portable Threader

BT-7100C Hand Held Power Threader is designed to drive Berkley 40000 series drop heads and RIDGID 12R heads. Unit comes complete with a support clamp which offsets the threaders torque while threading. Unit weighs only 30 lbs., yet can thread up to 2". Aluminum housing for durability.

### Specifications:

Motor Type: 1/2 H.P. Universal Type (Electric Motor).  
50-60Hz, 15 AMP (max), Approximately 30 lbs.,  
RPM: 30 (no load), Threading capacity 1/8"-2" NPT.



CROSSOVER BERKLEY #	RIDGE TOOL #	DESCRIPTION	WEIGHT (LBS.)
BT-7100	41935	Hand Held Power Threader	30

## Pipe Taps



Berkley taps feature precision ground flutes, 3/4" NPT taper. Available in right hand only.

NPT CARBON		THREADS PER INCH	DESCRIPTION	NPT HIGH SPEED	
BERKLEY #	RIDGE TOOL #			BERKLEY #	RIDGE TOOL #
BT-00300	35815	27	1/8" Pipe Tap	BT-00400	N/A
BT-00301	35820	18	1/4" Pipe Tap	BT-00401	N/A
BT-00302	35825	18	3/8" Pipe Tap	BT-00402	N/A
BT-00303	35830	14	1/2" Pipe Tap	BT-00403	N/A
BT-00304	35835	14	3/4" Pipe Tap	BT-00404	N/A
BT-00305	35840	11 1/2	1" Pipe Tap	BT-00405	N/A
BT-00306	35845	11 1/2	1 1/4" Pipe Tap	BT-00406	N/A
BT-00307	35855	11 1/2	1 1/2" Pipe Tap	BT-00407	N/A
BT-00308	37850	11 1/2	2" Pipe Tap	N/A	N/A
BT-00309	N/A	8	2 1/2" Pipe Tap	N/A	N/A
BT-00310	N/A	8	3" Pipe Tap	N/A	N/A
BT-00311	N/A	8	3 1/2" Pipe Tap	N/A	N/A
BT-00312	N/A	8	4" Pipe Tap	N/A	N/A

# Power Threader

The BT-5020C Power Threader complete is a versatile performer, field tested and proven, this machine is ideal for threading, cutting and turning, pipe up to 2 inches in diameter. Styled after the popular RIDGID® Model No. 300, this unit hits the ground running. BT-5020 components will fit the RIDGID® Model No. 300.



## **BT-5020C Power Threader**

Unit comes complete with BT-5020 Power head with footswitch, BT-334 Stand, BT-30032 Reamer, BT-30033 Cutter, BT-99992 Universal Die Head, BT-30006C-1 Oiler unit with one gallon threading oil, two BT-30014 support arms, one BT-30031 Carriage with lever, and one set each: 1/2-3/4" & 1-2" Universal high speed NPT dies.

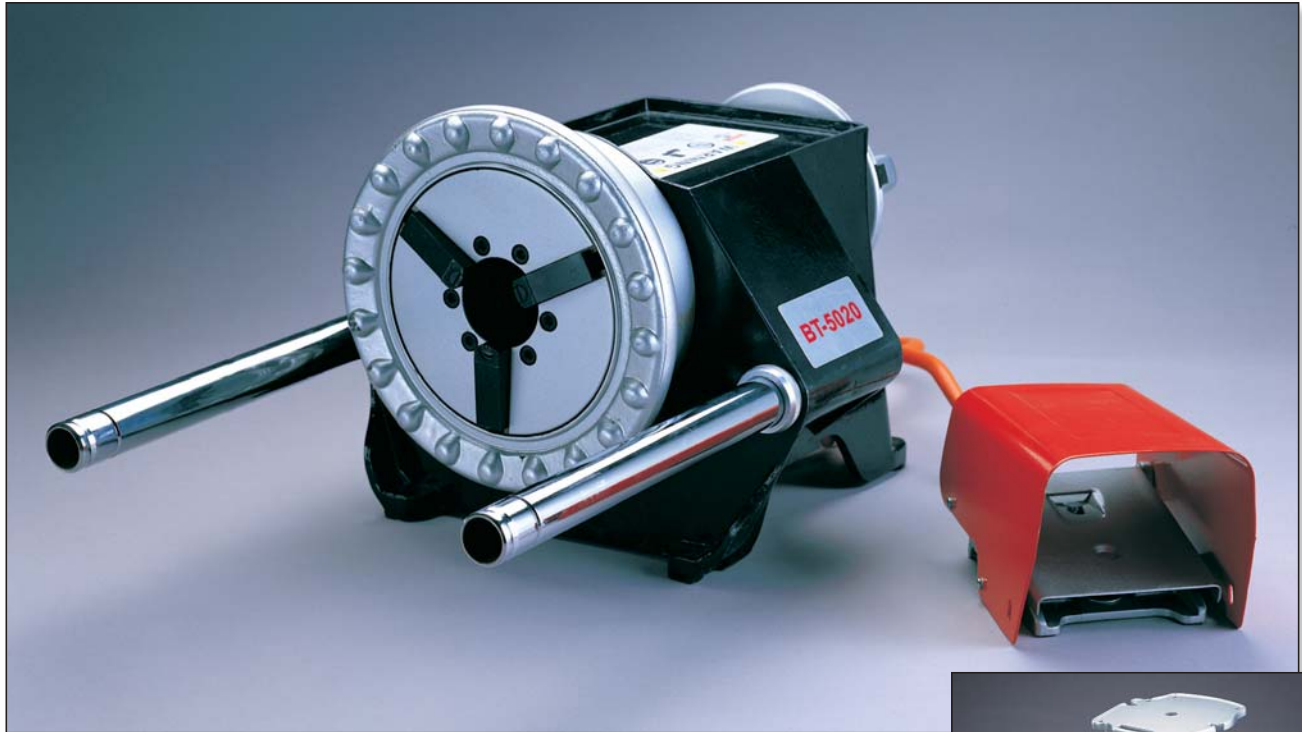
### **Specifications:**

Motor Type: 1/2 H.P. Universal reversible motor. 25-60Hz, 115Volt single phase (230V available), RPM:38, Chuck: Rocker type with replaceable inserts

<b>BERKLEY #</b>	<b>RIDGE TOOL #</b>	<b>DESCRIPTION</b>	<b>WEIGHT (LBS.)</b>
BT-5020C	15682	Power Threader	214

# Power Threader

## BT-5020 Power Threader



Power head allows you to customize the options needed for your application. Unit is supplied with footswitch and support arms.

### **Specifications:**

Motor Type: 1/2 H.P. Universal reversible motor. 25-60Hz, 115Volt single phase (230V available), RPM:38, Chuck: Rocker type with replaceable inserts



<b>BERKLEY #</b>	<b>RIDGE TOOL #</b>	<b>DESCRIPTION</b>	<b>WEIGHT (LBS.)</b>
BT-5020	41855	Power Threader	95
BT-334	42360	Stand for Power Threader	30

# Power Threader Accessories

## Carriage Assembly



REFERENCE #	BERKLEY #	RIDGE TOOL #	DESCRIPTION
1	BT-30033	42370	1/8" - 2" Pipe Cutter for BT-5020
2	BT-99992	97065	Universal 1/8" - 2" Die Head Self Oiling
3	BT-30031	68815	Carriage with lever includes No's 3,4, and 5
4	BT-30016	42385	Carriage lever kit includes No's 4 and 5
5	BT-30015	46215	Collar assembly
6	BT-30032	42365	Reamer
7	BT-30006C-1	41650	Oiler unit complete with one gallon oil
8	BT-30026	41680	Oil gun and hose only
9	BT-334	42360	Stand for BT-5020 Power Threader
10	BT-30030	N/A	Carriage complete with accessories includes No's 1-6
11	BT-30005	42575	Transporter for BT-5020
12	BT-30050	N/A	One gallon dark threading oil
	BT-30014	44425	Support Arms for carriage (see page 13)



# Replacement Parts



BERKLEY #	REF.	RIDGE TOOL #	DESCRIPTION
BT-77779	1	68820	Foot Switch with Power Cord fits RIDGID® Model No. 300/535
BT-77003	2	46730 or E-899	Power Cord Grommet fits RIDGID® Model No. 700 & 270 Power Threader
BT-73008	2	46735 or E-889-1	Power Cord Grommet fits RIDGID® Model No. 300/535
BT-77780	3	N/A	Extension Cord For BT-77779 Foot Switch
BT-73031	4	44540 or E-1491-X	Motor Brush Sets/2 fits RIDGID® Model No. 300/535
BT-77008	4	44815 or E-1900X	Motor Brush Set/2 fits RIDGID® Model No. 700/270
BT-73005	5	N/A	Armature Fan Only fits RIDGID® Model No. 300/535
BT-77004	5	N/A	Armature Fan fits RIDGID® Model No. 700 & 270 Power Threader
BT-73006	6	86690 or 87875	Field 115V fits RIDGID® Model No. 300/535
BT-73007	6	86705 or 87885	Field 230V fits RIDGID® Model No. 300/535
BT-77002	6	44070 or D-755	Field fits RIDGID® Model No. 700 Power Threader (115V)
BT-30043	7	43190 or B-947	Cover Plate fits RIDGID® Model No. 535
BT-73030	8	44505 or E-1417	Switch fits RIDGID® Model No. 300/535
BT-73002	9	44010 or D-696-X	Armature 115V fits RIDGID® Model No. 300/535
BT-73003	9	44030 or D-739-X	Armature 230V for RIDGID® Model No. 300/535
BT-77001	9	44055 or D-750-X	Armature fits RIDGID® Model No. 700 & 270 Power Threader (115V)
BT-77005	10	44795 or E-1895	Motor Brush Holder fits RIDGID® Model No. 700/270
BT-73009	10	45025 or E-2606	Motor Brush Holder fits RIDGID® Model No. 300/535
BT-30054	11	44715 or 1666X	Jaw Inserts (set 3) fits RIDGID® Model No. 300/535/270
BT-30052	12	44090 or D-838X	Chuck Jaw with Insert fits RIDGID® Model No. 300/270
BT-30051		N/A	Chuck Jaw without Insert fits RIDGID® Model No. 300/270
BT-30045	13	43900 or D-475-2X	Chuck Jaw with Insert fits RIDGID® Model No. 535
BT-77777	14	89185 or E-3342	Switch fits RIDGID® Model No. 270 Power Threader
BT-77010	14	44905 or E-1964	Switch fits RIDGID® Model No. 700 Power Threader
BT-77778	15	83940 or 2900	Micro Switch for foot switch
BT-77006	16	45660 or E-4404	Motor Brush Cap fits RIDGID® Model No. 700/270
BT-73011	16	44545 or E-1493-1	Motor Brush Cap fits RIDGID® Model No. 300/535
BT-73012	17	46740 or E-890-2	Power Cord fits RIDGID® Model No. 300 & 535 Power Threader (115V)
BT-77009	17	89155 or D-1298	Power Cord fits RIDGID® Model No. 700 & 270 Power Threader (115V)
BT-30047	18	42405	Drive Bar fits RIDGID® Model No. 844 for No. 141/161
BT-30001	19	44100 or D-842	Barrel Shaft
BT-30002	20	45335 or E3240-R	Bronze Bearing fits RIDGID® Model No. 300 Power Threader, Front/Rear
BT-30004	21	45260 or E-3127	Stop Pin fits RIDGID® Model No. 300 Power Threader
BT-30003	22	45345 or E-3242	Thrust Ring fits RIDGID® Model No. 300 Power Threader
BT-73004	23	44565 or E-1497	Armature Ball Bearing fits RIDGID® Model No. 300/535
BT-30037	23	44060 or D-751	Bearing for RIDGID® Model No. 700/270 Power Threader

# Hydrostatic Test Pumps

Berkley's line of hydrostatic test pumps are designed to pressure test the integrity of newly installed or serviced boilers, sprinkler systems, water lines and pressure vessels.



## **BT-8000 Deluxe Electric Hydrostatic Test Pump**

- 115V 3/4 HP
- 4 G.P.M. @ 300 psi
- Full flow bypass valve
- Pressure regulator with overpressure feature
- Check valve
- Aluminum base
- 48 lbs.
- 25' high pressure hose



## **BT-8120 Economy Test Pump**

- 115V 1/2 HP
- 2.8 G.P.M. @ 300 psi
- Aluminum base
- 39 lbs.
- 25' High Pressure Hose



## **BT-8125 Hand Operated Test Pump**

*Ideal for pressure testing residential water tanks and solar systems to 200psi comes with shut-off valve gauge and connector hose.*

# Roll Groovers



## Portable Roll Groovers

Berkley's portable roll groovers have been the industry standard for over twenty years. These portable units can groove schedule 40 with the same ease and precision as schedule 5-10. A wide range of optional rollers and shafts ensure this machine can handle your portable grooving needs. Please refer to the optional accessories for the options to suit your application. Units are shipped from the factory to fit a Berkley BT-5020 Power Threader, as well as a RIDGID® Model No. 300. Please refer to the options list for the mounting bracket for additional machine types.

BERKLEY #	DESCRIPTION	WEIGHT (LBS.)
BT-RG-100	Grooves 2-6" schedule 40 and thin wall	55
BT-RG-200	Grooves 1 1/4-3" schedule 40 and thin wall	55
BT-RG-1500	1-1/4" to 3" schedule 40 - 6" thinwall	52
BT-RG-2000	2" to 6" schedule 40	52

All models are shipped complete with metal carrying case, grease gun and hex wrench set.

### OPTIONS FOR THE 100 & 200

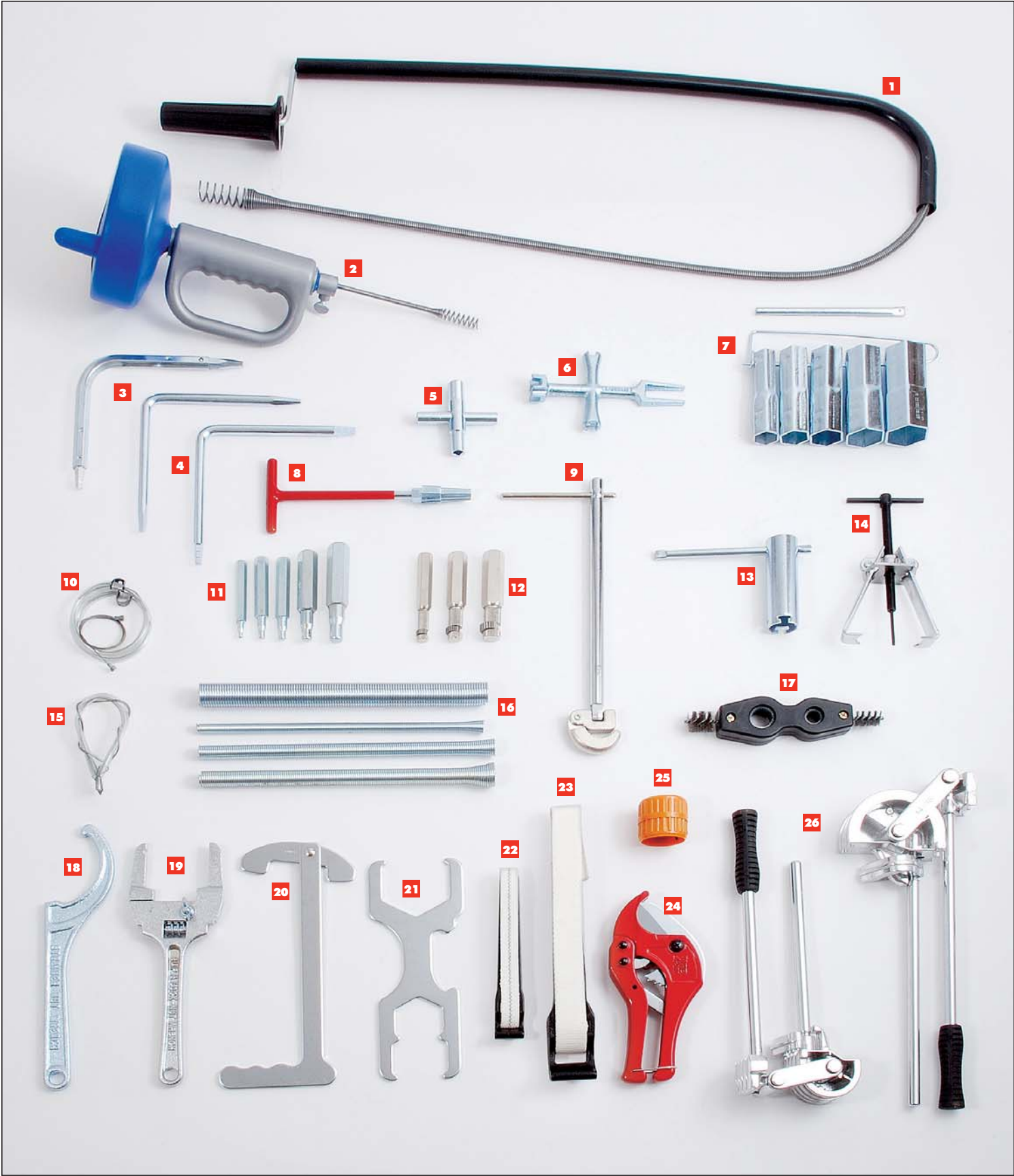
BERKLEY #	DESCRIPTION
BT-10033	Hex key wrench set
BT-10034	Metal carrying case
BT-10037	Grease gun with cartridge
BT-10080	Mounting bracket for RIDGID® Model No. 535
BT-10081	Bottom shaft for grooving with RIDGID® Model No. 535
BT-10082	Mounting bracket for RIDGID® Model No. 1822
BT-10083	Mounting bracket for Collins 22A
BT-10085	Mounting bracket for RIDGID® Model No. 400
BT-10086	Mounting bracket for RIDGID® Model No. 422
BT-10087	Mounting bracket for Rothenberger 2200A
BT-10045	1 1/4 - 1 1/2" top and bottom roller/shaft set for schedule 40 and thin wall
BT-10050	2 - 6" Roller and shaft set for copper (K,L,DWV)
BT-10055	2 - 6" Schedule top and bottom roller/shaft set for schedule 40
BT-10060	8 - 12" top and bottom roller/shaft set for thin wall up to schedule 20.
BT-10065	1 1/4" - 6" top and bottom roller/shaft set. 1 1/4" - 3" schedule 40 up to 6" thin wall



Roll Groover Power Threader combinations can be ordered as one unit by specifying the numbers below. Unit comes with BT-5020C Power Threader, BT-334 Stand, two BT-30014 support arms and the Groover of your choice.

BERKLEY #	DESCRIPTION	WEIGHT (LBS.)
BT-5020/RG-100	Power Threader RG-100 Combination	169
BT-5020/RG-200	Power Threader RG-200 Combination	169

# Plumbing Tools



# Plumbing Tools

REF. #	BERKLEY #	RIDGE TOOL #	DESCRIPTION	USAGE
1	BT-9728	59787	Toilet Drain Tool	For cleaning toilet drains - 3' length
2	BT-9720	59812	15' Canister Auger	Cleans tub and shower drains - 15' length
3	BT-9718	N/A	2 Way Faucet Seat Wrench	Installation and removal of faucet tub/seats
4	BT-9726	N/A	Tapered Seat Wrench	Removes and installs faucet/tub seat
5	BT-9709	N/A	4 Way Stem Key	Removes faucet tub stems - 4 sizes in one tool
6	BT-9712	N/A	P.O. Plug Wrench	For holding pop up plugs and drain strainers in place
7	BT-9710	N/A	Shower Stem Wrench	5 pc. set for installation/removal shower/tub stems
8	BT-4729	N/A	PVC Nipple Extractor	Removes broken pipe and nipples in PVC
9	BT-9706	31170	11" Basin Wrench	Used in limited access on faucet nuts and fittings
10	BT-9722	N/A	Wire Cable Saw	Cuts copper tubing in limited space
11	BT-9702	52420	Swaging Punch Set	5 pc. set will swage 1/4"-5/8" tube
12	BT-9701	N/A	Nipple Extractor/ Internal Pipe Wrench	3 pc. set to remove broken pipe nipples or internally tighten pipe/tube
13	BT-9711	N/A	Basket Strainer Wrench	Installs and removes strainer basket in sinks/tubs
14	BT-9713	N/A	Faucet Handle Puller	Removes stubborn faucet handles
15	BT-9723	N/A	Cable Saw For PVC	Cuts PVC Pipe in limited spaces
16	BT-9719	35285	Spring Tube Bender	Allows free form bending of tubing 1/16"-5/8"
17	BT-9724	34142	4 in 1 Brush	Cleans inside and outside of 1/2" & 3/4" copper tubing
18	BT-9708	N/A	Basket Strainer Nut Wrench	Use on basket strainer lock nuts
19	BT-9712	N/A	Adjustable Wrench	Use for basket strainer nut up to 3"
20	BT-9721	N/A	Garbage Disposal Wrench	Removes / installs garbage disposals
21	BT-9707	N/A	Spud Wrench	Used in repair of toilet tank spud repair
22	BT-9714	N/A	7" Strap Wrench	Installs and removes fixture without marring surface 1-1/4" cap.
23	BT-9715	N/A	11" Strap Wrench	Installs and removes fixture without marring surface 1-3/4" cap.
24	BT-9725	N/A	PVC Cutter	Ratcheting cutter easily cuts PVC up to 1-3/8"
25	BT-9705	95772	Inside / Outside Copper Deburring Tool	Deburrs inside and outside of copper tube end simultaneously
26	BT-9704	36962	6 in 2 Tube Bender	Lever bender for accurate tube bending 3/16"-5/8"

## Plumbers Kit - BT-33000



Includes: 1/2, 3/4, 1" drop heads, Ratchet and handle 1-1/2" pipe cutter, 10" iron pipe wrench

## Flaring Kit - BT-9703



Includes: Cutter and Flaring tool 1/4"-5/8" tubing.



## Sell Sheets

Berkley Tool will customize a sales flyer to promote your company and our products. Please ask your sales representative for details.

## Merchandising Aids

Berkley Tool offers merchandising display boards and counter top displays to showcase Berkley products.

These items are available at no charge on qualifying orders.



# *Notes*

---

---

---

---

---

---

---

---

---

---

---

---

---

---

---

---

---

---

---

---

---

---

---

---

---

---

---

---

---

---

*Berkley Tool is a member of these Trade Associations:*



